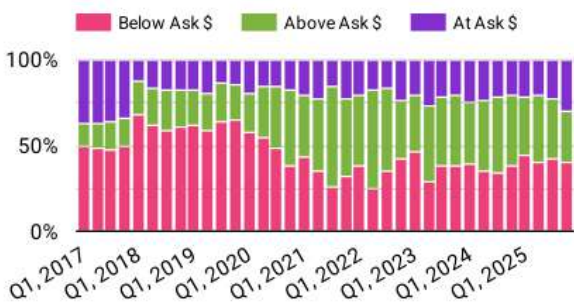
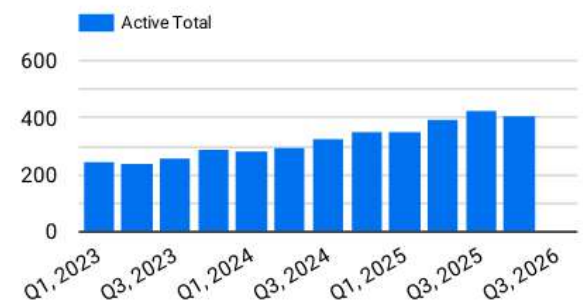
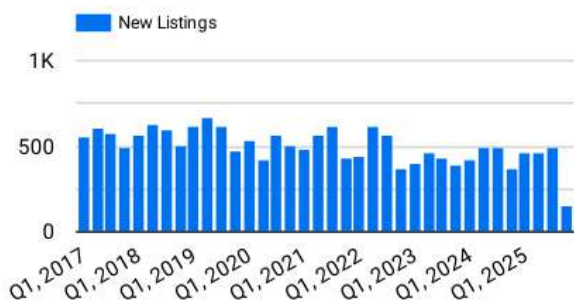


LOCAL MARKET UPDATE

October 2025

Cumberland County, NJ

	OCT 2025	OCT 2024	Change	SEP 2025	Change	YTD 2025	YTD 2024	Change
Closed Sales	125	115	8.7%	132	-5.3%	1,097	1,108	-1.0%
DOM	28	24	16.7%	26	7.7%	29	23	26.1%
Median Sales Price	263,000	245,000	7.3%	272,500	-3.5%	270,000	250,000	8.0%
Closed Over List Price	30.4%	50.4%	-39.7%	39.4%	-22.8%	35.9%	42.1%	-14.8%
Closed At List Price	29.6%	19.1%	54.7%	23.5%	26.0%	22.6%	22.7%	-0.6%
New Listings	158	170	-7.1%	127	24.4%	1,451	1,796	-19.2%
Active for Sale (avg)	411	356	15.4%	442	-7.1%	394	307	0.3
Pending Sales (avg)	159	172	-7.7%	144	10.6%	149	167	-0.1



kww THE MIKE LENTZ TEAM
KELLERWILLIAMS. REALTY