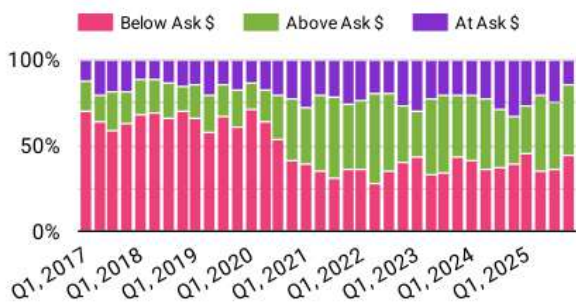
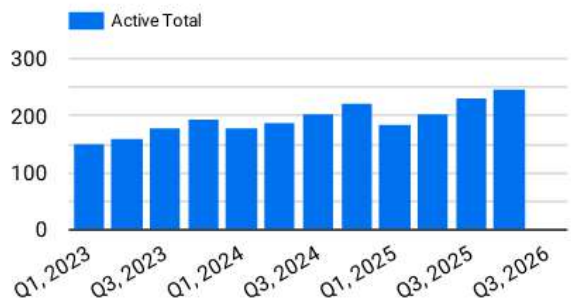
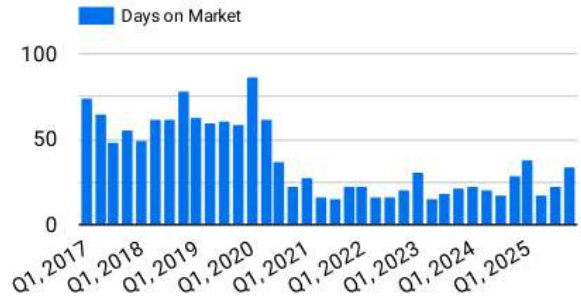


LOCAL MARKET UPDATE

October 2025

Salem County, NJ

| | OCT 2025 | OCT 2024 | Change | SEP 2025 | Change | YTD 2025 | YTD 2024 | Change |
|------------------------|----------|----------|--------|----------|--------|----------|----------|--------|
| Closed Sales | 70 | 43 | 62.8% | 77 | -9.1% | 655 | 612 | 7.0% |
| DOM | 36 | 30 | 20.0% | 25 | 44.0% | 24 | 22 | 9.1% |
| Median Sales Price | 260,000 | 245,000 | 6.1% | 260,000 | 0.0% | 265,000 | 250,000 | 6.0% |
| Closed Over List Price | 41.4% | 23.3% | 78.1% | 37.7% | 10.0% | 38.2% | 36.4% | 4.7% |
| Closed At List Price | 14.3% | 41.9% | -65.9% | 29.9% | -52.2% | 22.9% | 25.7% | -10.7% |
| New Listings | 85 | 96 | -11.5% | 91 | -6.6% | 894 | 1,056 | -15.3% |
| Active for Sale (avg) | 246 | 245 | 0.6% | 233 | 5.6% | 211 | 196 | 7.4% |
| Pending Sales (avg) | 88 | 78 | 12.5% | 91 | -3.3% | 87 | 86 | 1.5% |



kww THE MIKE LENTZ TEAM
KELLERWILLIAMS. REALTY